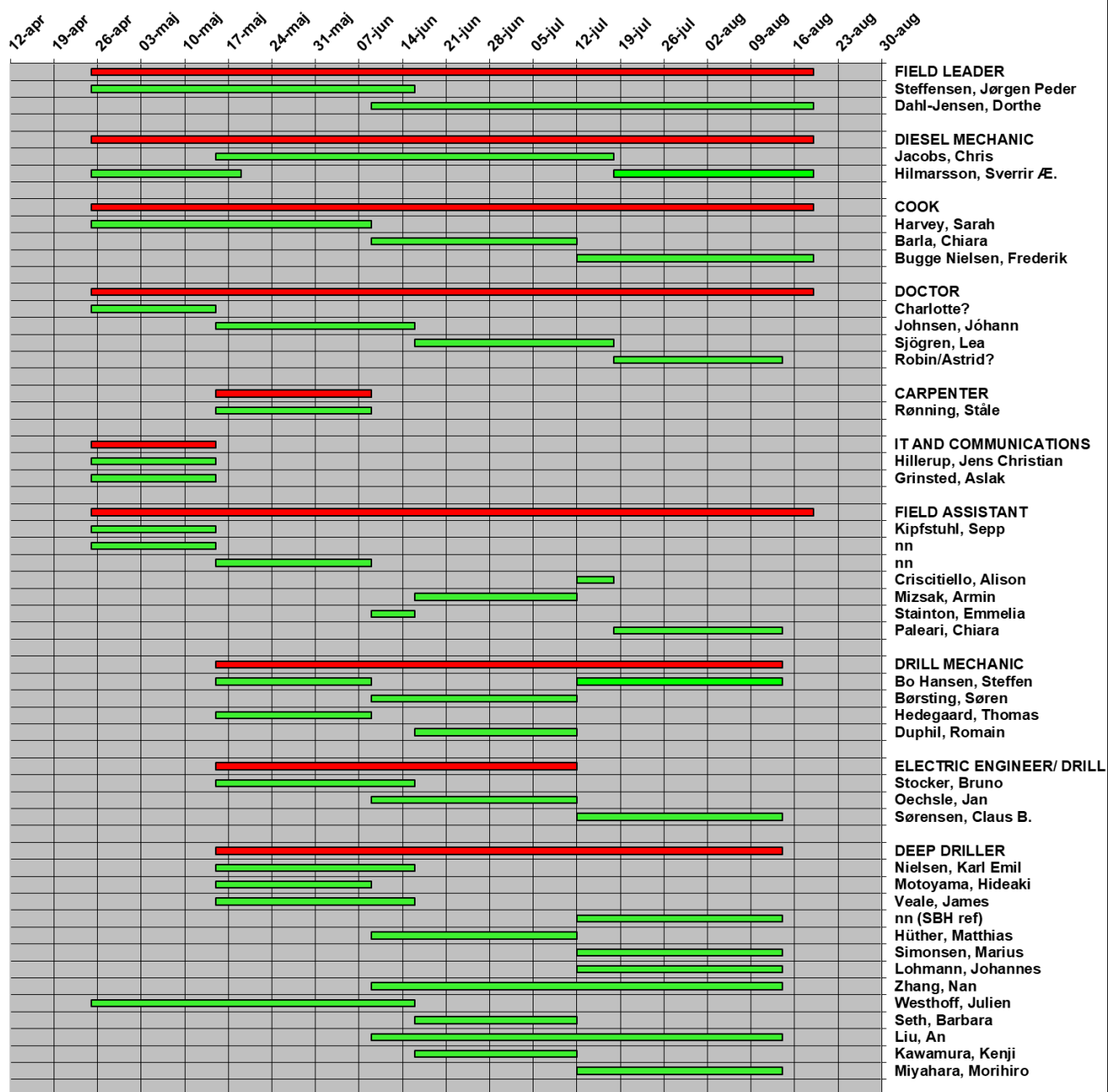


<b>EGRIP 2020 Manning plan, 28.Feb 2020</b>						
<b>Sorted by name</b>	Name	Country	Latest arrival to SFJ	To EGRIP	From EGRIP	Earliest departure from SFJ
Associated (Mills Radar)	Alabama guy	US	15-Jun	16-Jun	12-Jul	14-Jul
Associated (Mills Radar)	Alabama guy	US	15-Jun	16-Jun	12-Jul	14-Jul
Cryo Egg	Bagshaw, Elizabeth	UK	11-Jul	12-Jul	18-Jul	20-Jul
COOK	Barla, Chiara	DK/I	08-Jun	09-Jun	12-Jul	14-Jul
FOM	Blunier, Thomas	DK/CH	12-May			03-Jun
Drill Mechanic	Bo Hansen, Steffen	DK	14-May	15-May	09-Jun	11-Jun
Drill Mechanic	Bo Hansen, Steffen	DK	11-Jul	12-Jul	14-Aug	16-Aug
Drill Mechanic	Børsting, Søren	DK	08-Jun	09-Jun	12-Jul	14-Jul
Surface (vapour and snow)	Brashear, Chloe	US	08-Jun	09-Jun	18-Jul	20-Jul
COOK	Bugge Nielsen, Frederik	DK	11-Jul	12-Jul	19-Aug	21-Aug
Doctor	Charlotte ?	DK	24-Apr	25-Apr	15-May	17-May
Chief scientist	Cook, Eliza	DK/UK	11-Jul	12-Jul	14-Aug	16-Aug
Field Assistant	Criscitiello, Alison	CAN	11-Jul	12-Jul	18-Jul	20-Jul
FIELD LEADER	Dahl-Jensen, Dorte	DK	08-Jun	09-Jun	19-Aug	21-Aug
Surface (vapour and snow)	Dietrich, Laura	N/D	14-May	15-May	18-Jul	20-Jul
Surface (GPS strain)	Döring, Michael	DK/CH	15-Jun	16-Jun	12-Jul	14-Jul
Drill Mechanic	Duphil, Romain	F	15-Jun	16-Jun	12-Jul	14-Jul
DV and Media	First DV	0	08-Jun	09-Jun	16-Jun	18-Jun
DV and Media	First DV	0	08-Jun	09-Jun	16-Jun	18-Jun
Shear margin	Freitag, Johannes	D	14-May	15-May	09-Jun	11-Jun
processing + PP	Frenzel, Andreas	D	14-May	15-May	16-Jun	18-Jun
Surface (mercury)	Gao, Zhiyuan (Jeff)	CAN	15-Jun	16-Jun	12-Jul	14-Jul
processing + logging	Gerber, Tamara	DK/CH	18-May	19-May	16-Jun	18-Jun
Chief scientist	Gkinis, Vasileios	DK/GR	08-Jun	09-Jun	12-Jul	14-Jul
DV and Media	GLT inspection team	US/CHN	11-Jul	12-Jul	18-Jul	20-Jul
Surface (GPS strain)	Grinsted, Aslak	DK	15-Jun	16-Jun	12-Jul	14-Jul
IT and comms	Grinsted, Aslak	DK	24-Apr	25-Apr	15-May	17-May
COOK	Harvey, Sarah	US	24-Apr	25-Apr	09-Jun	11-Jun
Drill Mechanic	Hedegaard, Thomas	DK	14-May	15-May	09-Jun	11-Jun
IT and comms	Hillerup, Jens Christian	DK	24-Apr	25-Apr	15-May	17-May
MECHANIC	Hilmarsson, Sverrir Æ.	IS	24-Apr	25-Apr	19-May	21-May
MECHANIC	Hilmarsson, Sverrir Æ.	IS	17-Jul	18-Jul	19-Aug	21-Aug
P-Res radar	Humbert, Angelika	D	15-Jun	16-Jun	12-Jul	14-Jul
Driller	Hüther, Matthias	D	08-Jun	09-Jun	12-Jul	14-Jul
MECHANIC	Jacobs, Chris	UK	14-May	15-May	18-Jul	20-Jul
processing + PP	Jansen, Daniela	D	11-Jul	12-Jul	14-Aug	16-Aug

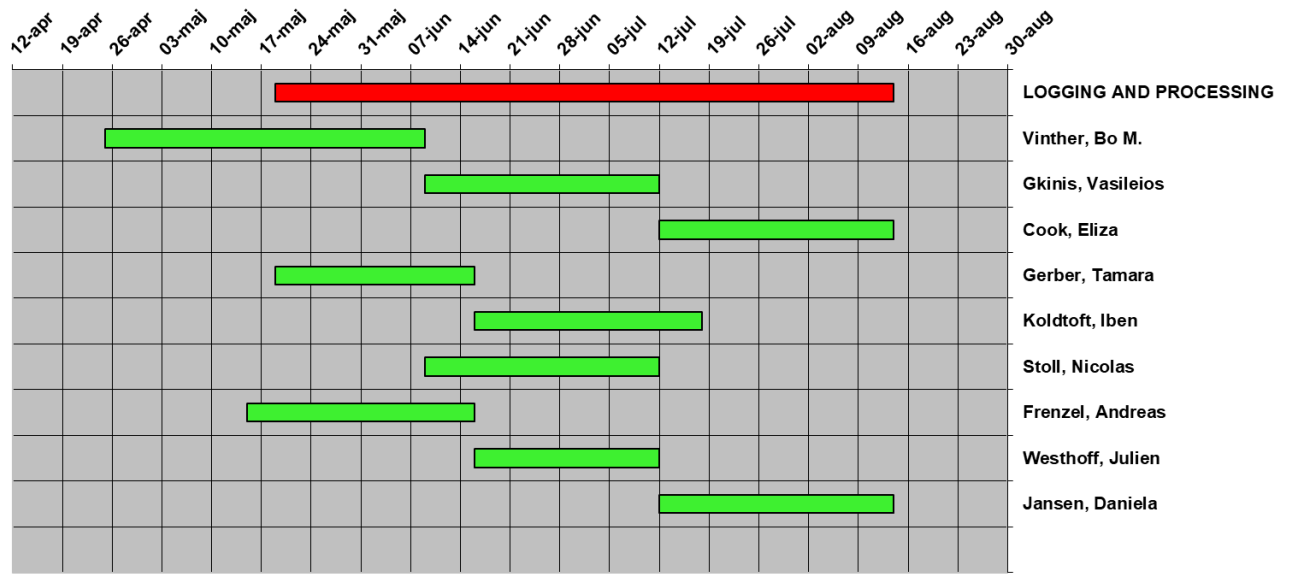
Doctor	Johnsen, Jóhann	IS	14-May	15-May	16-Jun	18-Jun
Driller	Kawamura, Kenji	J	15-Jun	16-Jun	12-Jul	14-Jul
Field Assistant	Kipfstuhl, Sepp	D	24-Apr	25-Apr	15-May	17-May
Shear margin	Kipfstuhl, Sepp	D	14-May	15-May	09-Jun	11-Jun
FOM	Kirk, Marie	DK	17-Apr			07-May
FOM	Kirk, Marie	DK	05-Jun			10-Jul
FOM	Kirk, Marie	DK	14-Aug			27-Aug
FOM	Koldtoft, Iben	DK	17-Apr			08-Jun
processing + logging	Koldtoft, Iben	DK	08-Jun	09-Jun	18-Jul	20-Jul
Associated (Mills Radar)	Lilien, David	DK/US	15-Jun	16-Jun	12-Jul	14-Jul
Driller	Liu, An	CHN	08-Jun	09-Jun	14-Aug	16-Aug
Driller	Lohmann, Johannes	DK/D	11-Jul	12-Jul	14-Aug	16-Aug
Associated (TUNU drill)	McConnell, Joe	US	15-May	16-May	23-May	25-May
Associated (TUNU drill)	McConnell, Joe	D	11-Jun	12-Jun	14-Jun	16-Jun
Driller	Miyahara, Morihito	J	11-Jul	12-Jul	14-Aug	16-Aug
Field Assistant	Mizsak, Armin	D	15-Jun	16-Jun	12-Jul	14-Jul
Surface (vapour and snow)	Morris, Valerie	US	14-May	15-May	18-Jul	20-Jul
Driller	Motoyama, Hideaki	J	14-May	15-May	09-Jun	11-Jun
Cryo Egg	n.n.	UK	11-Jul	12-Jul	18-Jul	20-Jul
Driller	Nielsen, Karl Emil	DK	14-May	15-May	16-Jun	18-Jun
Field Assistant	nn	0	24-Apr	25-Apr	15-May	17-May
Field Assistant	nn	0	14-May	15-May	09-Jun	11-Jun
Associated (TUNU drill)	nn	US	15-May	16-May	23-May	25-May
Associated (TUNU drill)	nn	US	15-May	16-May	23-May	25-May
Associated (TUNU drill)	nn	US	15-May	16-May	23-May	25-May
Associated (TUNU drill)	nn	US	15-May	16-May	23-May	25-May
Associated (TUNU drill)	nn	US	15-May	16-May	23-May	25-May
Associated (TUNU drill)	nn	US	15-May	16-May	23-May	25-May
Associated (TUNU drill)	nn	US	15-May	16-May	23-May	25-May
Associated (TUNU drill)	nn	US	15-May	16-May	23-May	25-May
PROMICE	nn	DK	22-May	23-May	26-May	28-May
PROMICE	nn	DK	22-May	23-May	26-May	28-May
Associated (TUNU drill)	nn	US	11-Jun	12-Jun	14-Jun	16-Jun
Associated (TUNU drill)	nn	US	11-Jun	12-Jun	14-Jun	16-Jun
Associated (TUNU drill)	nn	US	11-Jun	12-Jun	14-Jun	16-Jun
Associated (TUNU drill)	nn	US	11-Jun	12-Jun	14-Jun	16-Jun
Associated (TUNU drill)	nn	US	11-Jun	12-Jun	14-Jun	16-Jun
Associated (TUNU drill)	nn	US	11-Jun	12-Jun	14-Jun	16-Jun
Associated (TUNU drill)	nn	US	11-Jun	12-Jun	14-Jun	16-Jun
Associated (TUNU drill)	nn	US	11-Jun	12-Jun	14-Jun	16-Jun
DV and Media	nn	DK/N	11-Jul	12-Jul	18-Jul	20-Jul
Associated (PARCA)	nn (PARCA flt crew)	IS	22-May	23-May	26-May	28-May

Associated (PARCA)	nn (PARCA flt crew)	IS	22-May	23-May	26-May	28-May
Associated (PARCA)	nn (PARCA)	US	22-May	23-May	26-May	28-May
Associated (PARCA)	nn (PARCA)	US	22-May	23-May	26-May	28-May
Associated (PARCA)	nn (PARCA)	US	22-May	23-May	26-May	28-May
Associated (PARCA)	nn (PARCA)	US	22-May	23-May	26-May	28-May
Driller	nn (SBH ref)	0	11-Jul	12-Jul	14-Aug	16-Aug
electronics	Oechsle, Jan	DK	08-Jun	09-Jun	12-Jul	14-Jul
Field Assistant	Paleari, Chiara	S/I	17-Jul	18-Jul	14-Aug	16-Aug
FOM	Rasmussen, Sune O.	DK	08-Jun			21-Jun
Doctor	Robin/Astrid?	DK	17-Jul	18-Jul	14-Aug	16-Aug
Carpenter	Rønning, Ståle	N	14-May	15-May	09-Jun	11-Jun
Surface (vapour and snow)	Rozmiarek, Kevin	US	14-May	15-May	18-Jul	20-Jul
Driller	Seth, Barbara	CH/D	15-Jun	16-Jun	12-Jul	14-Jul
Driller	Simonsen, Marius	DK	11-Jul	12-Jul	14-Aug	16-Aug
Doctor	Sjögren, Lea	DK	15-Jun	16-Jun	18-Jul	20-Jul
electronics	Sørensen, Claus B.	DK	11-Jul	12-Jul	14-Aug	16-Aug
Field Assistant	Stainton, Emmelia	CAN	08-Jun	09-Jun	16-Jun	18-Jun
Surface (vapour and snow)	Steen-Larsen, Hans Christian	N/DK	14-May	15-May	19-May	21-May
Associated (PARCA)	Steffen, Koni (PARCA)	CH/US	22-May	23-May	26-May	28-May
FIELD LEADER	Steffensen, Jørgen Peder	DK	24-Apr	25-Apr	16-Jun	18-Jun
FOM	Steffensen, Jørgen Peder	DK	08-Jul			25-Aug
FOM	Steffensen, Nanna	DK	08-Jul			15-Aug
Associated (Mills Radar)	Steinhage, Daniel	D	15-Jun	16-Jun	12-Jul	14-Jul
Electric Engineer	Stocker, Bruno	CH	14-May	15-May	16-Jun	18-Jun
processing + logging	Stoll, Nicolas	D	08-Jun	09-Jun	12-Jul	14-Jul
Surface (vapour and snow)	Vaughn, Bruce	US	14-May	15-May	16-Jun	18-Jun
Driller	Veale, James	UK	14-May	15-May	16-Jun	18-Jun
Chief scientist	Vinther, Bo M.	DK	24-Apr	25-Apr	09-Jun	11-Jun
Surface (mercury)	Wang, Feiyue	CAN	15-Jun	16-Jun	12-Jul	14-Jul
Driller	Westhoff, Julien	DK/D	24-Apr	25-Apr	16-Jun	18-Jun
processing + PP	Westhoff, Julien	DK/D	15-Jun	16-Jun	12-Jul	14-Jul
P-Res radar	Zeising, Ole	D	15-Jun	16-Jun	12-Jul	14-Jul
Driller	Zhang, Nan	CHN	08-Jun	09-Jun	14-Aug	16-Aug

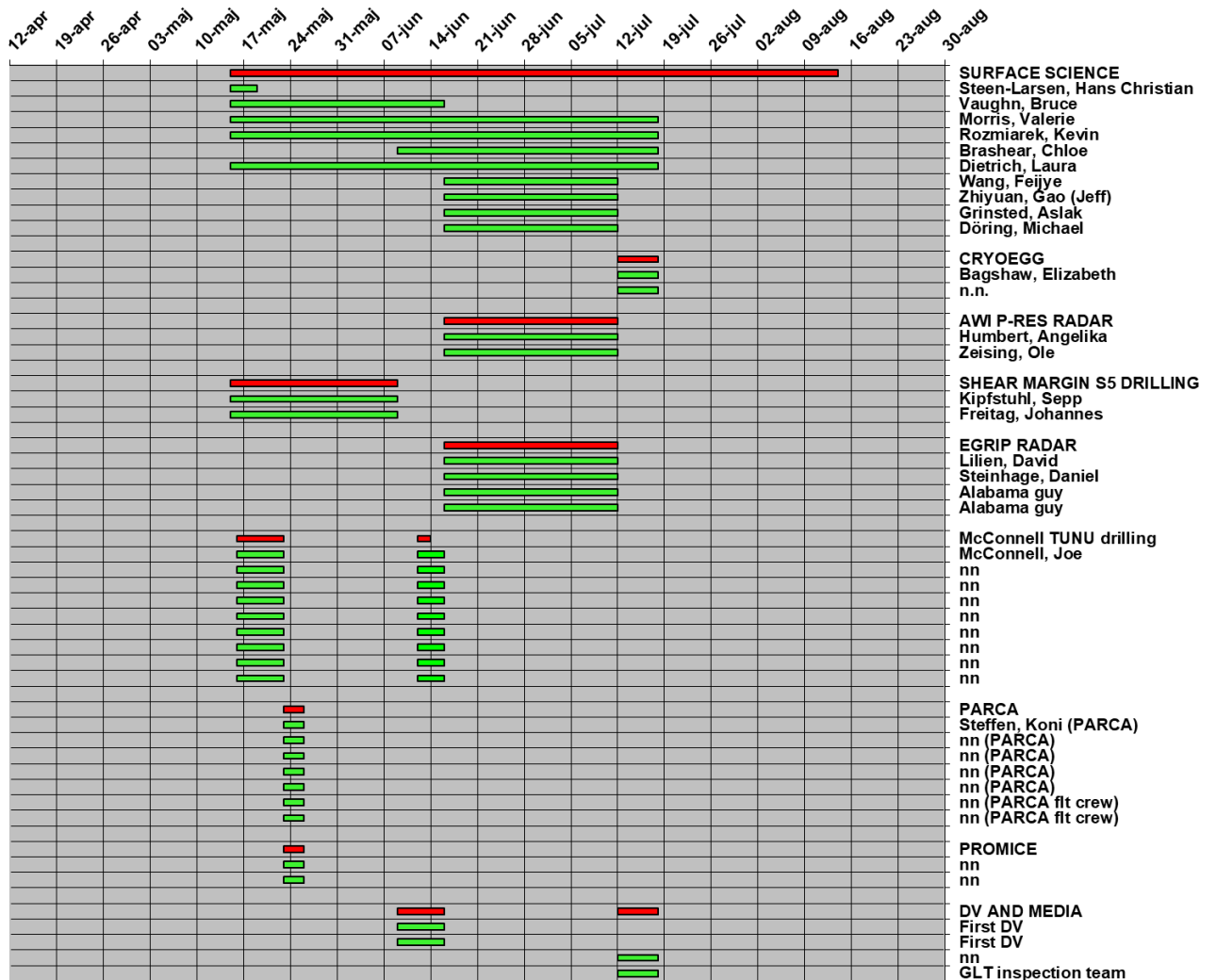
**EGRIP 2020 Manning,  
logistics and deep drilling**



### EGRIP 2020 Manning, science and processing



### EGRIP 2020 Manning, associated programs



### EGRIP 2020 camp load

