

Little Dome C

Beyond EPICA Oldest Ice Drilling Site (75.29917 °S, 122.44516 °E)

Situation Report 53, 08. January 2025

Personnel @LDC:

Lisa Ardoin (ULB), Marie Bouchet (CNRS), Ailsa Chung (CNRS), Danilo Collino (ENEA, Camp Leader), Inès Gay (IPEV), Matthias Hüther (AWI, Chief Driller), Manuela Krebs (AWI), Gunther Lawer (AWI), Johannes Lemburg (AWI), Martin Leonhardt (AWI), Michele Scalet (ENEA), Federico Scoto (CNR), Barbara Seth (UNIBE), Lison Soussaintjean (UNIBE), Julien Westhoff (UCPH, Chief Scientist), Frank Wilhelms (AWI, PI in the field)

Weather at LDC 5 pm: sunny

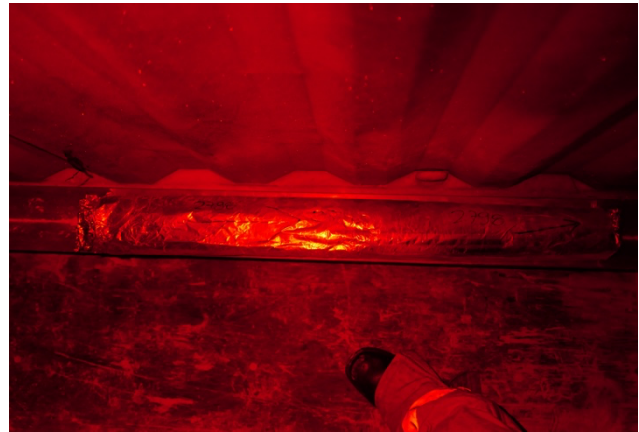
Weather at DC 5 pm: temperature: -28.5°C, wind 6 knts



We did 6 runs between 19:30 yesterday and 19:30 today. We had penetration and core catching problems as the cutter and the core catchers tarnished while working on the debris laden ice. No core was processed. The PICARRO team continued processing samples at the maximum pace.



Worn cutter and debris frozen to the drill head during run #898 without penetration. Credit: F. Wilhelms ©PNRA/IPEV



Core packed in aluminum foil, to protect from illumination with sunlight. Credit: F. Wilhelms ©PNRA/IPEV



Packing in the ice core box, additionally protected with a black plastic bag. Credit: F. Wilhelms ©PNRA/IPEV



Dull core dog from running on debris rich rock. Credit: F. Wilhelms ©PNRA/IPEV

End of day statistics at 19:30

- Driller's depth: 2804.69 m;



- we did 6 runs between 19:30 yesterday and 19h30 today. The length of these cores was: no core caught, 2.195, no core caught, 0.85 m, no penetration, no core caught (driller length, last run #899), for a total of 3.045 m;
- Logger's depth: 2799.04 m (preliminary);
- Current processing depth: 2783 m; daily total: 0 m; season total: 1173 m.

FW, JW, MH, 08.01.2025

