

Little Dome C

Beyond EPICA Oldest Ice Drilling Site (75.29917 °S, 122.44516 °E)

Situation Report 50, 05. January 2025

Personnel @LDC:

Lisa Ardoin (ULB), Marie Bouchet (CNRS), Ailsa Chung (CNRS), Danilo Collino (ENEA, Camp Leader), Inès Gay (IPEV), Matthias Hüther (AWI, Chief Driller), Manuela Krebs (AWI), Gunther Lawer (AWI), Johannes Lemburg (AWI), Martin Leonhardt (AWI), Michele Scalet (ENEA), Federico Scoto (CNR), Barbara Seth (UNIBE), Lison Soussaintjean (UNIBE), Julien Westhoff (UCPH, Chief Scientist), Frank Wilhelms (AWI, PI in the field)

Weather at LDC 5 pm: sunny

Weather at DC 5 pm: temperature: -27.5°C, wind 4 knts



We did 2 runs between 13:00 yesterday and 19:30 today. We welded the deadweights from the parts that had been prepared at Mario Zucchelli station and arrived the evening before from Concordia station to complete the rock drill, we might apply once we reach consolidated sediment or rock. Today, processing continued with 23 m. The PICARRO team continued processing samples at the maximum pace.



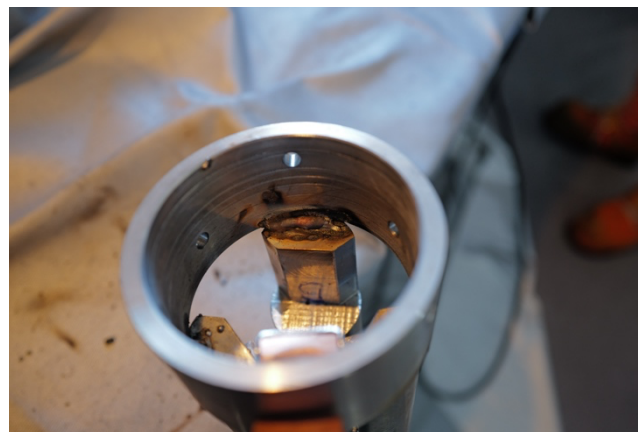
Unpacking the dead weight parts Giulano, Massimo and Gianluca sent. Credit: F. Wilhelms ©PNRA/IPEV



Lemmi grinding on the dead weight. Credit: F. Wilhelms ©PNRA/IPEV



Gunther welding a dead weight. Credit: F. Wilhelms ©PNRA/IPEV



A weld at the top coupling of the dead weight. Credit: F. Wilhelms ©PNRA/IPEV





Moving the core into the dark processing cave..
Credit: J. Westhoff ©PNRA/IPEV

End of day statistics at 19:30

- Driller's depth: 2797.04 m;
- we did 2 runs between 13 and 19h30 today. The length of these cores was: 4.35, 4.52 (driller length, last run #885), for a total of 8.87 m;
- Logger's depth: 2792.54 m;
- Current processing depth: 2762 m; daily total: 23 m; season total: 1173 m.

FW, JW, MH, 05.01.2025

