

**Little Dome C**

**Beyond EPICA Oldest Ice Drilling Site (75.29917 °S, 122.44516 °E)**

**Situation Report 49, 04. January 2025**

**Personnel @LDC:**

Lisa Ardoin (ULB), Marie Bouchet (CNRS), Ailsa Chung (CNRS), Danilo Collino (ENEA, Camp Leader), Inès Gay (IPEV), Matthias Hüther (AWI, Chief Driller), Manuela Krebs (AWI), Gunther Lawer (AWI), Johannes Lemburg (AWI), Martin Leonhardt (AWI), Michele Scalet (ENEA), Federico Scoto (CNR), Barbara Seth (UNIBE), Lison Soussaintjean (UNIBE), Julien Westhoff (UCPH, Chief Scientist), Frank Wilhelms (AWI, PI in the field)

**Weather at LDC 5 pm:** sunny

**Weather at DC 5 pm:** temperature: -28°C, wind 5 knts

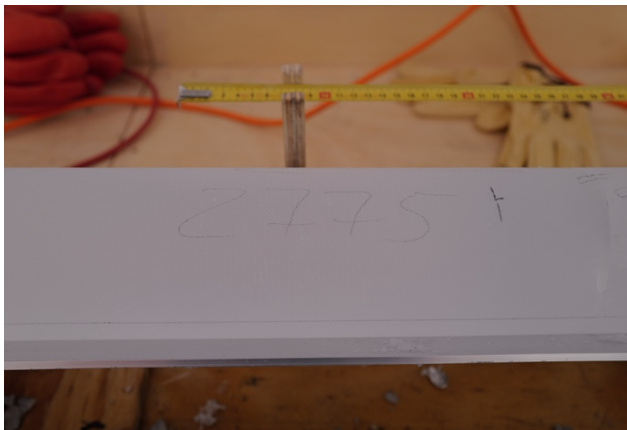


We did 5 runs between 19:30 yesterday and 17:30 today. We passed the depth of the EPICA Dronning Maud Land core of 2774.15 m. The PICARRO team continued processing samples at the maximum pace. No core was processed as we only had few meters from two days before, they will be pooled and processed with the core from the following days.

Ailsa, Michele and Federico undertook an attempt to record with the RAMAC 500 MHz radar along the flow line towards the EDC drill site, but the radar would not start, presumably at the low temperatures.

Danilo went to Concordia station for another safety training with the wintering team. He brought 54 ice core boxes into the balloon cave. Thank you to the Concordia team for helping with the handling. On the way back Danilo brought food, the pieces for the deadweights for the rock drill, and the IGE drill for a LEG-ACI project drilling at LDC. Thanks again to Giulano, Massimo and Gianluca for getting the pieces of the deadweights ready, which really eases our operation.

Ailsa and Manuela unpacked and tested the Rèmei tool.



Bag 2775, we are deeper than the EPICA Dronning Maud Land drilling. Credit: F. Wilhelms ©PNRA/IPEV



Ailsa and Manuela testing the Rèmei tool for surface snow sampling. Credit: F. Wilhelms ©PNRA/IPEV





Pizza dinner on Saturday night.  
Credit: F. Wilhelms ©PNRA/IPEV



LDC Cluedo. Credit: F. Wilhelms ©PNRA/IPEV

### End of day statistics at 17:30

- Driller's depth: 2787.73 m;
- we did 5 runs between 19h30 yesterday and 17h30 today. The length of these cores was: 4.50, 4.36, 4.51, 4.41, 4.49 (driller length, last run #883), for a total of 22.27 m;
- Logger's depth: 2783.60 m;
- Current processing depth: 2739 m; daily total: 0 m; season total: 1150 m.

FW, JW, MH, 04.01.2025

