

Little Dome C

Beyond EPICA Oldest Ice Drilling Site (75.29917 °S, 122.44516 °E)

Situation Report 13, 29. November 2024

Personnel @LDC:

Lisa Ardoin (ULB), Marie Bouchet (CNRS), Ailsa Chung (CNRS), Danilo Collino (ENEA, Camp Leader), Inès Gay (IPEV), Matthias Hüther (AWI, Chief Driller), Manuela Krebs (AWI), Gunther Lawer (AWI), Johannes Lemburg (AWI), Martin Leonhardt (AWI), Michele Scalet (ENEA), Federico Scoto (CNR), Barbara Seth (UNIBE), Lison Soussaintjean (UNIBE), Julien Westhoff (UCPH, Chief Scientist), Frank Wilhelms (AWI, PI in the field)

Weather at LDC 5 pm: sunny

Weather at DC 5 pm: temperature: -33°C, wind 3 knts



Boring Fehler! Textmarke nicht definiert.. We did 7 runs between 19:30 and 24 hours before. Processing in the trench continued for 53 more meters and continued on the core drilled this season. The PICARRO runs fine and the running series skipped a short section to prioritize deeper samples for catching up with the processing. In the evening, we loaded the orange piece-goods sled, called “sfusi” — meaning loose goods, with 16 archive boxes, 14 A-cut boxes and 7 B-cut boxes. We changed the drill head and overworked the worn cutters.



Worn outer step cutter after roughly 200 m of drilling.
Credit: F. Wilhelms ©PNRA/IPEV



Lemmi overworking the pump
Credit: F. Wilhelms ©PNRA/IPEV

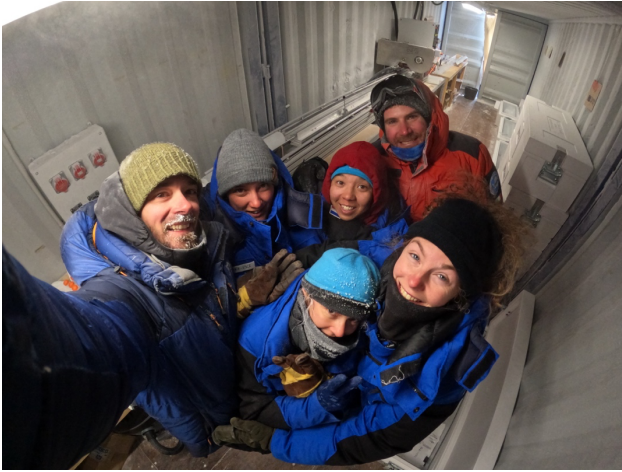


First version of a heat box from casing tubes for complete de-icing of the drill's shaft. F. Wilhelms ©PNRA/IPEV



The drill-shaft in the casing tube. Credit:
F. Wilhelms ©PNRA/IPEV

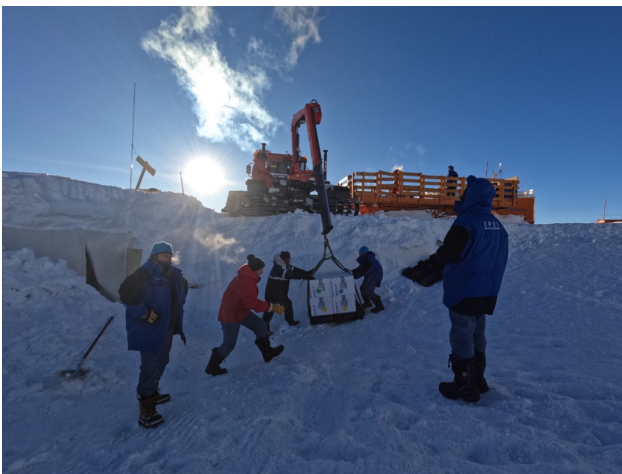




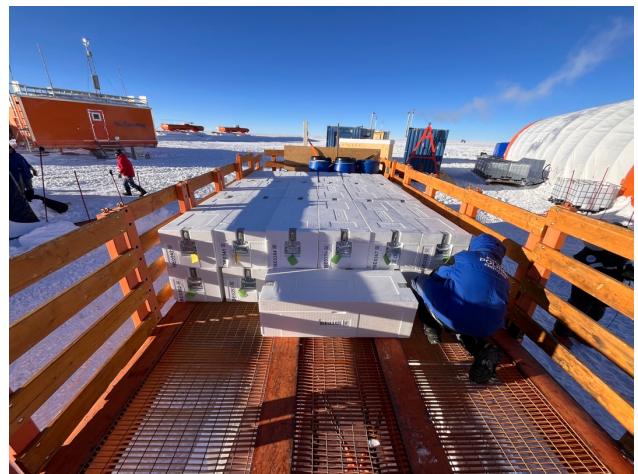
The science team, also known as the cave people, in their natural habitat, the processing trench.
Credit: J Westhoff ©PNRA/IPEV



The cave people warming up from the -40°C trench.
Credit: J Westhoff ©PNRA/IPEV



After dinner, loading 4 ice core boxes with the crane onto the orange "sfusi" sledge. Credits: J. Westhoff ©PNRA/IPEV



37 ice core boxes ready on the "sfusi" sledge for early morning departure. Credits: F. Scoto ©PNRA/IPEV

End of day statistics at 19:30:

- Driller's depth: 2039.00 m;
- we did 7 runs between 19h30 and 19h30. The length of these cores was: 4.52, 4.51, 4.46, 4.425, 4.345, 4.27, 4.43 (driller length, last run #712), for a total of 30.96 m;
- Logger's depth: 2038.02 m
- Current processing depth: 1929 m; daily total: 53 m; season total: 169 m.

FW, JW, MH, 29.11.2024

